

# BlueMarine



## Horizontal Submarine Electrophoresis Units

The BlueMarine electrophoresis units are applied to separation of nucleic acids in agarose gels. Most common applications are rapid screening of PCR fragments, analysis of restriction digests and plasmid preparations, checking in vitro transcripts etc.



### User-friendly design

- Gels can be cast and run in the same tray (UV transparent) – easy to prepare, easy to start
- Gel casting gates – no taping, leak-free sealing gaskets with improved fit – insert the gaskets and pour the gel, no extra sealing step required
- 2-4 comb positions – for parallel analysis of maximum sample numbers
- Red contrasting stripes on the white support plate at all comb positions – simplifies loading of the gel by better visibility of the wells
- External handles – facilitate to move around the closed unit safely even when filled
- Choice of combs – different thickness and number of wells, combs for multichannel-pipette-loading and preparative combs
- Compact, durable, ergonomic design
- Safety lid provides correct orientation of electrodes
- Small buffer volume

BlueMarine units are designed for safe and easy handling and feature a rugged, most durable acrylic construction, ensuring a long-lasting lifetime. Doubly insulated cables are rated safe up to 3,000 volts. Gold plated electrical connectors are corrosion-free. The recessed power connectors are integrated into the safety lid. The new designed platinum electrodes can be easily replaced by the user.

### Two different chamber sizes are available

#### BlueMarine 100

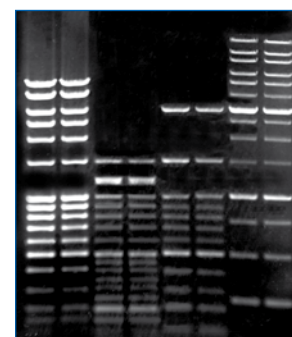
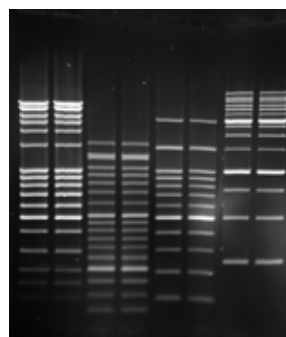
Gel format 7 x 10 cm for quick analysis of up to 28 samples. Contains main unit and also:

- 1 removable UV transparent gel tray (7 x 10 cm)
- 2 gel casting gates
- 1 comb (1.0 mm, 8 samples)

#### BlueMarine 200

Gel formats 15 x 15 cm or 15 x 20 cm for best resolution or high throughput analysis. Contains main unit and also:

- 1 removable UV transparent gel tray (15 x 15 cm)
- 1 removable UV transparent gel tray (15 x 20 cm)
- 2 gel casting gates
- 2 combs (1.0 mm, 16 samples)



### Accessories

#### Combs

- Variety of combs of all purposes, from multichannel pipette to preparative
- Up to 2 combs in parallel (BM 100)
- Up to 4 combs in parallel (BM 200)

#### Gel trays

- UV transparent
- With lifting aids to avoid contact with buffer
- Gels can be cast and run in the same tray
- Special casting gates seal the tray for casting

#### Casting gates

- Leak-free system
- Insert the gasket into the tray and pour the gel
- No extra sealing or taping step required

#### Electrodes

- Easy to clean
- Fast replacement if necessary

### BluePower™ 400 Marine Power Supply (BP-400-MAR)

The BluePower™ 400 Marine Power Supply (400 V, 500 mA, 50 W) serves many applications like submarine electrophoresis of nucleic acid agarose gels and SDS PAGE in mini gel format. 4 x 2 outlets, programmable.



### Ordering Information

Product	Size	Cat. no.
BlueMarine 100	1 piece	BM-100
BlueMarine 200	1 piece	BM-200
BluePower™ 400 Marine	1 piece	BP-400-MAR

### Accessories for BlueMarine 100 (gel width 7 cm)

Product	Number of wells	Thickness of comb (mm)	Width of well (mm)	Depth of well (mm)	Cat. no.
Comb	14	1.5	3.0	10	BM-100-14-1.5
	14	2.0	3.0	10	BM-100-14-2.0
	12	1.0	3.7	10	BM-100-12-1.0
	12	1.5	3.7	10	BM-100-12-1.5
	8	1.0	6.0	10	BM-100-8-1.0
	8	1.5	6.0	10	BM-100-8-1.5
Preparative Comb	1	2.0			BM-100-P1-2.0
Gel tray, 7 x 10 cm					BM-100-21
Casting Gate, 2 pcs.					BM-100-31
Replacement electrode					BM-100-41

### Accessories for BlueMarine 200 (gel width 15 cm)

Product	Number of wells	Thickness of comb (mm)	Width of well (mm)	Depth of well (mm)	Cat. no.
Comb	10	1.0	12	10	BM-200-10-1.0
	10	1.5	12	10	BM-200-10-1.5
	10	2.0	12	10	BM-200-10-2.0
	16	1.0	7	10	BM-200-16-1.0
	16	1.5	7	10	BM-200-16-1.5
	16	2.0	7	10	BM-200-16-2.0
	20	1.0	5	10	BM-200-20-1.0
	20	1.5	5	10	BM-200-20-1.5
	20	2.0	5	10	BM-200-20-2.0
	Multich.-Pipette Comb	31	1.0	3	10
26		1.0	4	10	BM-200-M26-1.0
26		1.5	4	10	BM-200-M26-1.5
26		2.0	4	10	BM-200-M26-2.0
Preparative Comb	1 + 2	1.0	125	10	BM-200-P2-1.0
	1 + 2	2.0	125	10	BM-200-P2-1.0
Gel tray, 15 x 15 cm					BM-200-15-2
Gel tray, 15 x 20 cm					BM-200-20-2
Casting Gate, 2 pcs.					BM-200-31
Replacement electrode					BM-200-41