

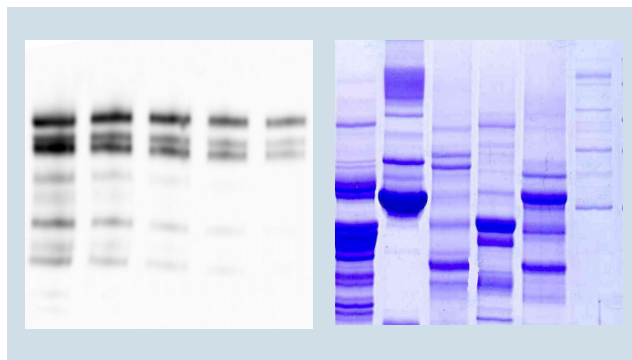
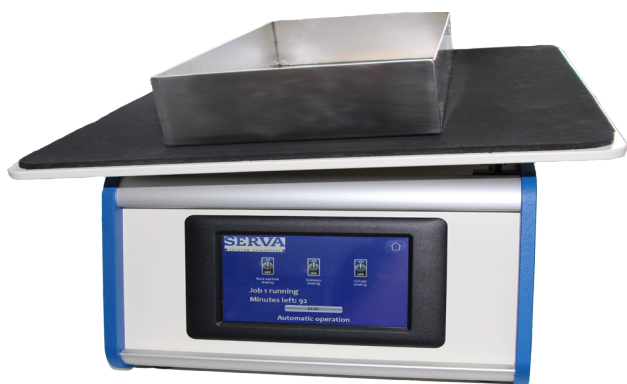
SERVA BlueShake

SERVA
■ serving scientists ■

Robust rocking table for highest demands

SERVA BlueShake is a next generation rocking table. A solid aluminium housing, top quality electronic components and mechanics that meet the highest demands make BlueShake a laboratory device that is also ideally equipped for continuous use in research and diagnostic laboratories.

- 4° angle of inclination for gentle movement
- Large table surface for versatile use
- Timer function
- Direction of movement freely selectable (forward/reverse - lateral - circular)
- Gels, membranes etc. can be fixed with magnets if required
- Robust design - Made in Germany



Easy to use

The large touch screen allows easy and intuitive operation of the device. If necessary, adjust the time, the rocking direction and the speed, start, done.



Sturdy, durable construction

The device is characterized by a stable design: Built on an aluminium housing, it is equipped with robust, precisely running motors. The movement of the table can be controlled manually in all directions at a freely adjustable speed. For a gentle staining or immunoblotting process, the angle of inclination is 4°. The generously dimensioned touch screen is absolutely waterproof and, like the entire device, easy to clean. The built-in mechanism is maintenance-free.

Specifications

Inclination of table	4°
Size table	39 cm x 33 cm
Size touchscreen	5" (800 px x 480 px)
Size (hxbxd)	39 cm x 17,5 cm x 41 cm
Power connection	240 V, 150 W max.

Ordering information

Product	Size	Cat. no.
SERVA BlueShake	1 piece	BSH-01