

## SERVACHrom Protein Standard III

Cat. No. 39255

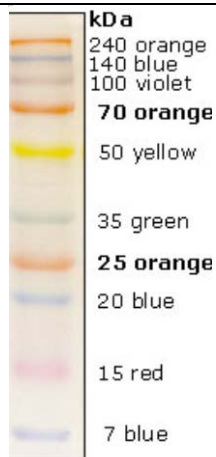
### Product Description:

**General** Ready-to-use protein standard consisting of 10 multi-colored proteins whose molecular weights are well-adjusted ranging from 7 to 240 kDa. The combination of 6 different color offers a good contrast and each color serves as a reference for a certain size. Because coupling of chromophore to the proteins affects their apparent molecular weights in SDS-PAGE, unstained protein standard should be used for accurate molecular weight determination.

**Application** • SDS-PAGE, Western Blotting

**Features**

- 10 individually dyed proteins with 6 different colors
- Broad range size estimation: 7-240 kDa
- Easy visualization during electrophoresis and evaluation of western transfer efficiency
- Color reference for a certain size
- Ready to use solution



**Storage** -20 °C, please aliquot in a small volume for prevention of repeated freezing & thawing.

**Usage information** Recommended loading volume:

- 5 – 10 µl/lane for mini gel (10 x 8 cm, 0.75 or 1 mm thick)
- 10 – 15 µl/lane for large gel (30 x 20 cm, 1 or 1.5 mm thick)

Version 04/08