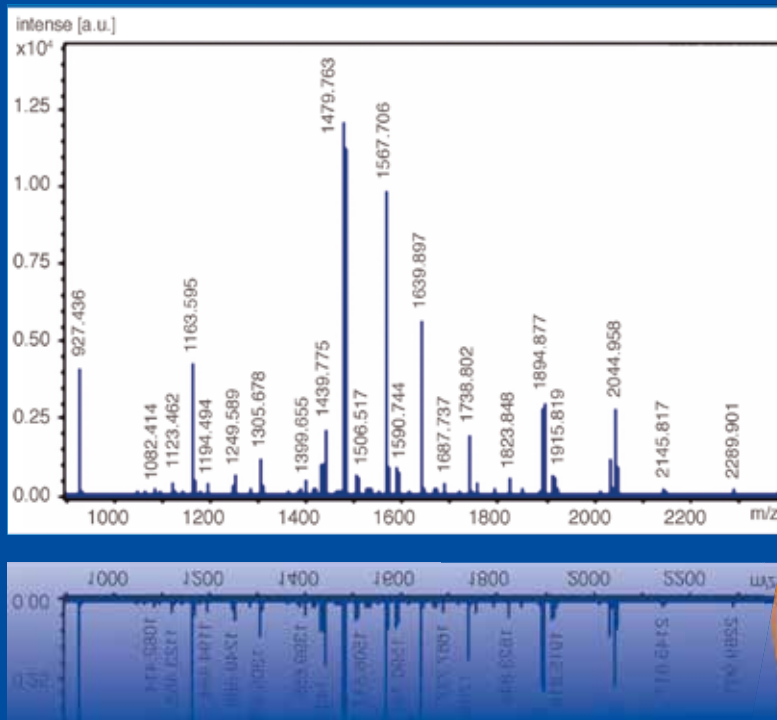


# Trypsin MS Approved

## Digest with the Best!

### Special offer: BUY 2, GET 3!\*



- Modified by Reductive Methylation
- Extreme Stability, High Purity
- Source: Porcine Pancreas
- Customized Quantities (e.g. 1 mg) available

Cat. no.	Product	Quantity	Price
37283.01	Trypsin NB Sequencing Grade	4 x 25 µg	59,00 €
37284.01	Trypsin NB Premium Grade <sup>§</sup>	4 x 25 µg	78,00 €
37286.01	Trypsin MS Approved <sup>§</sup>	1 x 100 µg	54,00 €

\*Offer valid for 37283.01, 37284.01 and 37286.01 until April 30<sup>th</sup>, 2017. When ordering please mention promotion code TRP-1/17.

<sup>§</sup>Each lot MS approved

## For mass spectrometric analysis of proteins

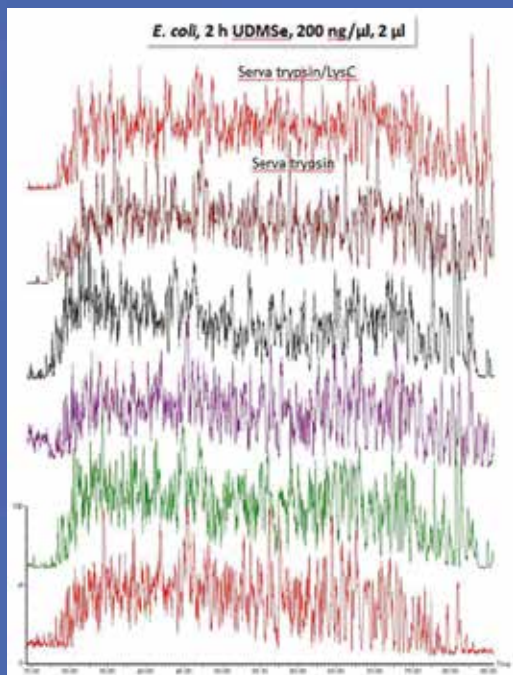
# Trypsin MS Approved

## Digest with the Best!

### Performance of SERVA Trypsin MS Approved (cat. no. 37286) – A short comparative study\*

SERVA trypsin was tested in triplicate experiments in comparison to the products of two main competitors. Both the digestion of gel-separated proteins (example bovine serum albumin, 1 µg per band) and of total proteomes (*Escherichia coli*, 400 ng per injection into LC/MS; HeLa, 125 and 250 ng on-column) was investigated. In addition, double-digestion with trypsin/Lys C was tested. As Figure 1 illustrates, all products performed equally well. Thereby, the addition of Lys C did not provide any further advantage. It is important to note that for the digestion of total proteomes a laboratory filter-based protocol was employed while in the case of the digestion of the BSA bands the instructions of the individual manufacturers were followed.

In the latter, there were slight differences particularly concerning peptide extraction. While all protocols lead to a sequence coverage of ~80%, additional steps in peptide extraction improved coverage, albeit at the extent of handling time. Again, the use of Lys C did not provide any additional information for BSA although, in other unrelated experiments, it had shown improvements in sequence coverage for the digestion of some proteins.



Base peak chromatograms for LC-MS runs on M-Class-Synapt G2 Si. For the *E. coli* lysate filter-based digest approximately 900 to 1000 proteins were detected for both trypsin and trypsin/Lys C digests with SERVA trypsin performing above average.

\*Experimental details are available upon request. For further information please contact our product specialist at [tech.service@serva.de](mailto:tech.service@serva.de).