

Biochemicals  
Electrophoresis  
Bioseparation  
Life Sciences  
Specials

## SERVAGel™ N

Vertical precast gels for native PAGE

### Why native PAGE?

The analysis of protein samples is often performed by SDS PAGE. Due to the denaturing conditions, this method is not suitable to analyse multi-protein complexes. Native proteins can be analysed by Blue or Clear Native PAGE.

### Blue Native (BN) PAGE

- Substitution of the denaturing detergent SDS by SERVA Blue G (Cat. No. 35050) or Coomassie Brilliant Blue G250 (Cat. No. 17524)
- Formation of negatively charged protein-dye complexes without changing the native protein structure
- Isoelectric point (pI)-independent migration of the protein-dye complexes towards the anode at physiological pH

### Clear Native (CN) PAGE

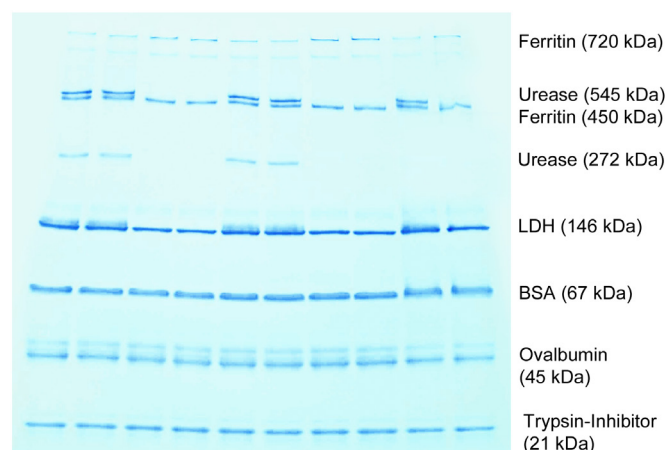
- No use of anionic dyes
- pH-dependent net charge of proteins determines the migration within the electric field
- Separation of proteins with pI < 7 at physiological pH
- method of choice if subsequent analysis are dye-sensitive

### Ordering Information

Product	Quantity	Cat. No.
SERVAGel™ N 3 - 12, Vertical Native Gel 3 - 12 %, 12 wells	10 gels	43250.01
SERVAGel™ N 3 - 12, Vertical Native Gel 3 - 12 %, 10 wells	10 gels	43251.01
SERVAGel™ N 4 - 16, Vertical Native Gel 4 - 16 %, 10 wells	10 gels	43252.01
SERVAGel™ N 4 - 16, Vertical Native Gel 4 - 16 %, 12 wells	10 gels	43253.01
SERVAGel™ N Native Gel Starter Kit (contains 4 gels, buffers, Blue G solution and native marker mix)	1 kit	43204.01

### SERVAGel™ N Vertical Native Gel

- Suitable for both Blue and Clear Native PAGE
- Ready-to-use precast gels
- Available as gradient gels: 3-12 % and 4-16 %
- Available with 10 or 12 sample wells
- Produced in stable, environment-friendly plastic cassettes



**SERVAGel™ N, gradient 4-16 % Clear Native PAGE of marker proteins**

**Buffers:**  
1x Anode buffer for BN/CN (Cat. No. 42535)  
1x Cathode Buffer for BN/CN (Cat. No. 42536)  
**Electrophoresis conditions:**  
10 min U: 50 V const.  
120 min U: 200 V const.

### Ordering Information (related products)

Product	Quantity	Cat. No.
10x Native Anode Buffer for BN/CN PAGE	1 L	42535.01
10x Native Cathode Buffer for BN/CN PAGE	500 mL	42536.01
2x Sample Buffer for BN PAGE	20 mL	42533.01
2x Sample Buffer for CN PAGE	20 mL	42534.01
SERVA Native Marker Liquid Mix for BN/CN PAGE	5 x 50 µL	39219.01
SERVA Blue G Solution (1 %) for BN PAGE	20 mL	42538.01

SERVA Electrophoresis GmbH

Carl-Benz-Str. 7 · D-69115 Heidelberg · Germany  
Phone: +49 (0) 6221 13840-0 · Fax: +49 (0) 6221 13840-10  
E-Mail: info@serva.de · Internet: www.serva.de

