

## PRODUCT INFORMATION

**SERVA HPE™ Lightning Red**

**Cat. No. 43400**

### Product description:

**General** The kit contains 250 µg fluorescence dye and 25 µl dimethylformamide (DMF, water-free).

**Application** Fluorescent dye for direct protein labeling prior to 2D gel electrophoresis, compatible with mass spectrometry and other downstream applications, e. g. Western blotting.

If necessary, gels can be post stained, e. g. with silver stain.

**Storage** Store powder dry and dark at +2 °C – +8 °C. If stored as recommended, at least usable until: see expiry date on label. Reconstitute dye (in water-free DMF) is stable for at least 6 months when stored in aliquots at -20 °C.

**Detection** Excitation: 530 nm; Emission: 610 nm when bound to protein

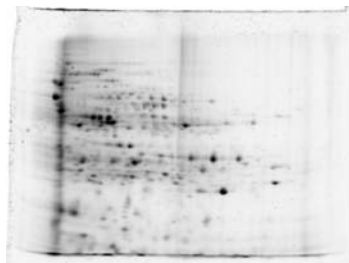
### Labeling protocol:

**Note:** Proteins must be dissolved in denaturing lysis buffer. The dye is compatible with all additives typically used for sample solubilisation and protein extraction, including carrier ampholytes like SERVALYTs, reductants like dithiothreitol (DTT) and dithioerythreitol (DTE).

**Dye** Dissolve 250 µg SERVA HPE™ Lightning Red

**Solution** in 25 µl water-free DMF

- Labeling**
- Label 1 µg protein with 80 pmol dye, e. g. add 1 µl of dye solution to 30 µl protein solution (10 µg protein/µl lysis buffer).
  - Mix gently and place vial at 0 °C for 15 min.
  - Apply labeled protein solution on IPG strip via rehydration or cup loading.



**Figure:**

20 µg extract of pre-stained *E.coli* lysate in a SERVA IPGBlueStrip (pH 5-8, Cat. No. 43006) followed by SDS PAGE in a SERVAgeIT™TG PRIME™ 14 % (Cat. No. 43271) vertical mini gel.

**Detection:** Fluorescent scan with Typhoon imager